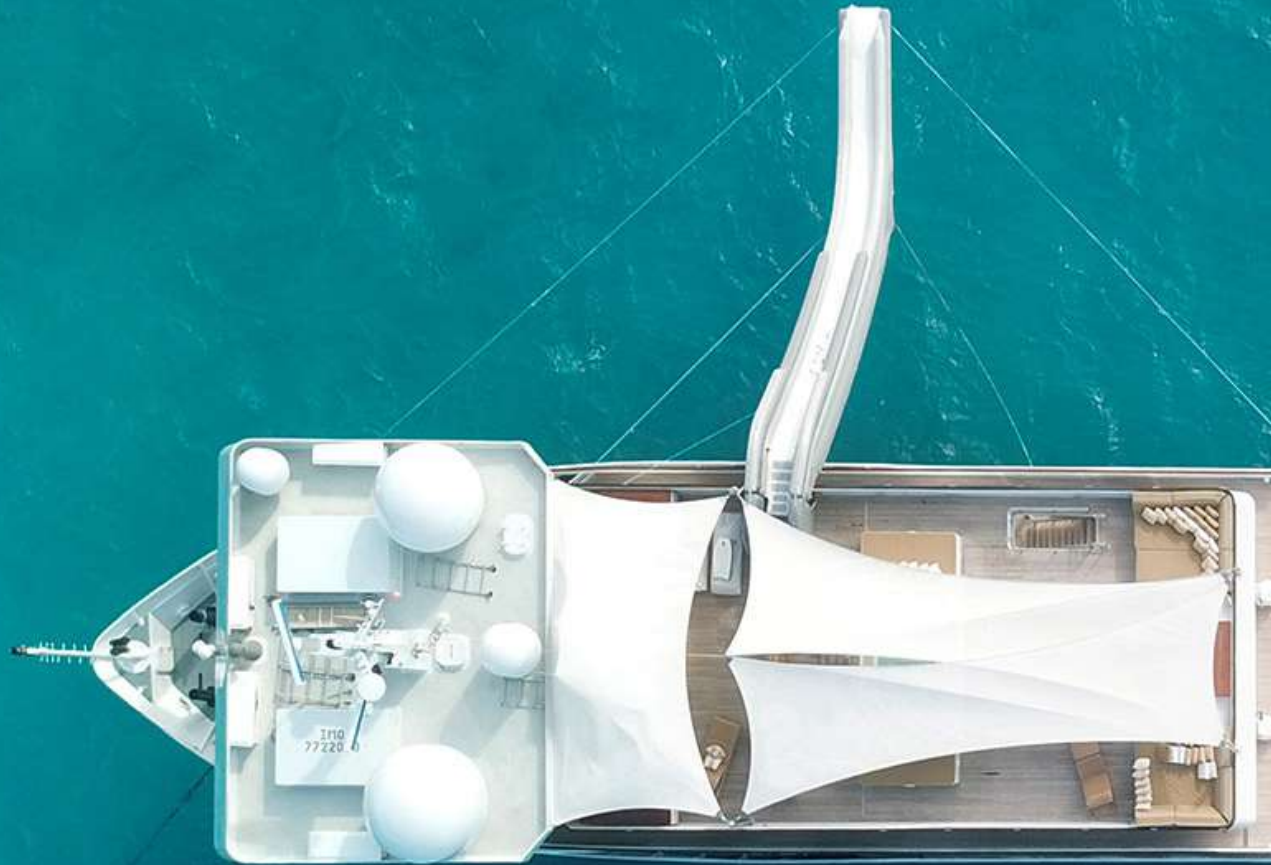




SuRi

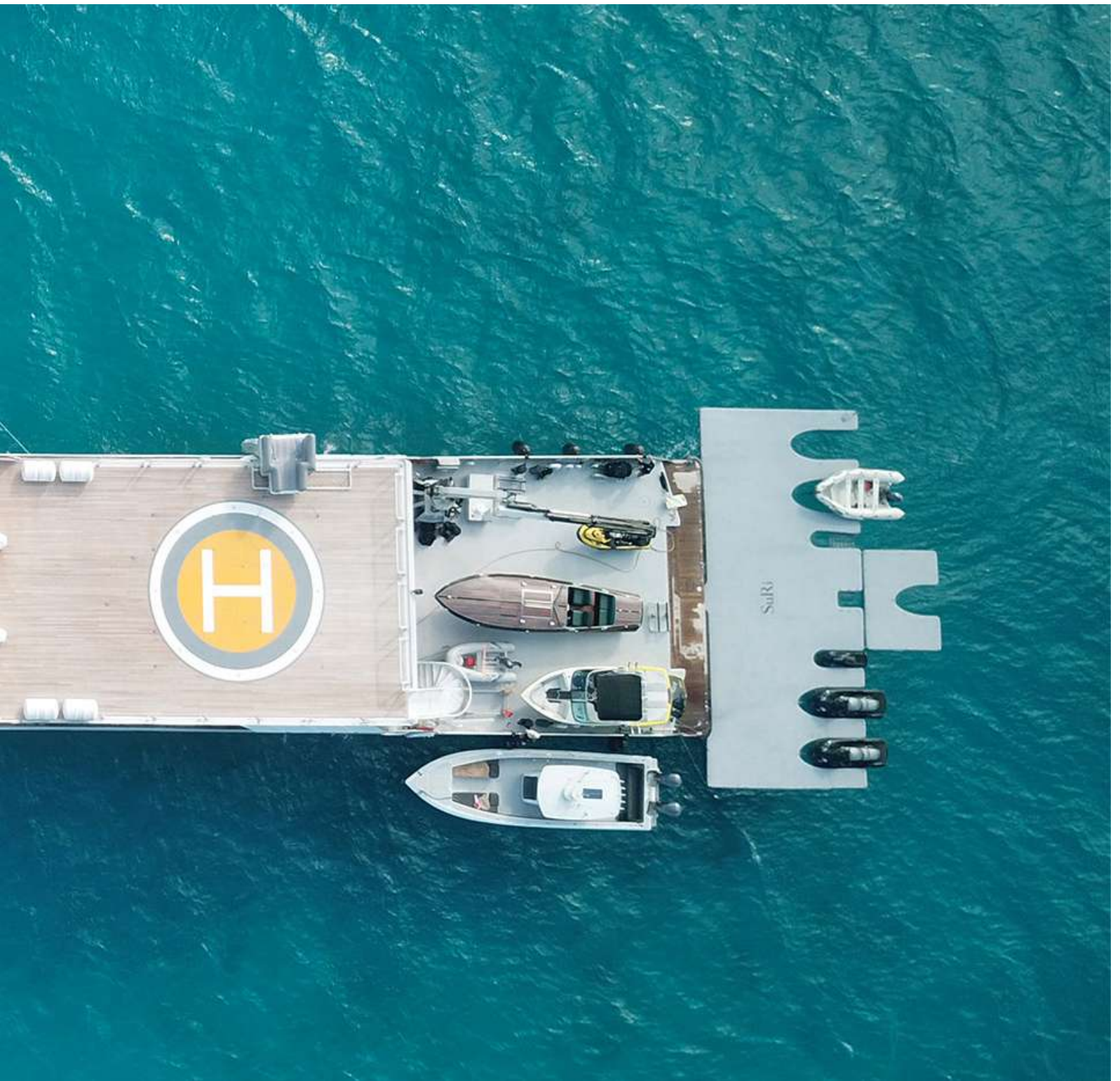
Charter your dream





“

SuRi's mission is to make the impossible, possible. Our only question is when can we make your dream charter yacht vacation a reality?



# Welcome

Where luxury abounds and dream adventures beckon. As one of very few purpose-built luxury yachts in the world, SuRi combines endless comfort with limitless adventure.

From white sandy beaches and vibrant reefs, to lush green rainforests and ancient caves, let SuRi take you to some of the world's most beautiful places on an adventure like no other.

No other luxury charter vessel has the collection of toys and tenders that SuRi has, enabling her to transform any destination – land, air, or sea – into unbridled once-in-a-lifetime experiences.











# SuRi Experience

With endless luxury both onboard and off, and access to some of the world's most beautiful and untouched destinations, SuRi truly delivers a charter yacht experience like no other.

Whether you're scuba diving among exotic reefs, taking flight in the seaplane, or cruising across the water in the Stancraft Wooden Speedster, SuRi will feed your adventurous side in every way possible.









“

Soar over bright blue oceans, lush tropical islands and sandy atolls





# Why Charter SuRi?

As one of very few purpose-built luxury yachts in the world, Suri offers the perfect combination of elegance, comfort, and adventure. A beautiful yacht, stylishly appointed with comfort in mind, offering everything you could possibly desire on your unforgettable dream charter vacation.

From braving treacherous seas as a crabber on popular television show, *Deadliest Catch*, to sailing the South Pacific, SuRi has certainly led an adventurous life. After undergoing over five years of conversions, refits, and a major hull extension, which involved cutting her in two, adding a 36-foot mid-section, then joining her back together, SuRi finally revealed her new 208-foot profile and became the ultimate luxury adventure yacht she is today.













# SeaKeepers Mission

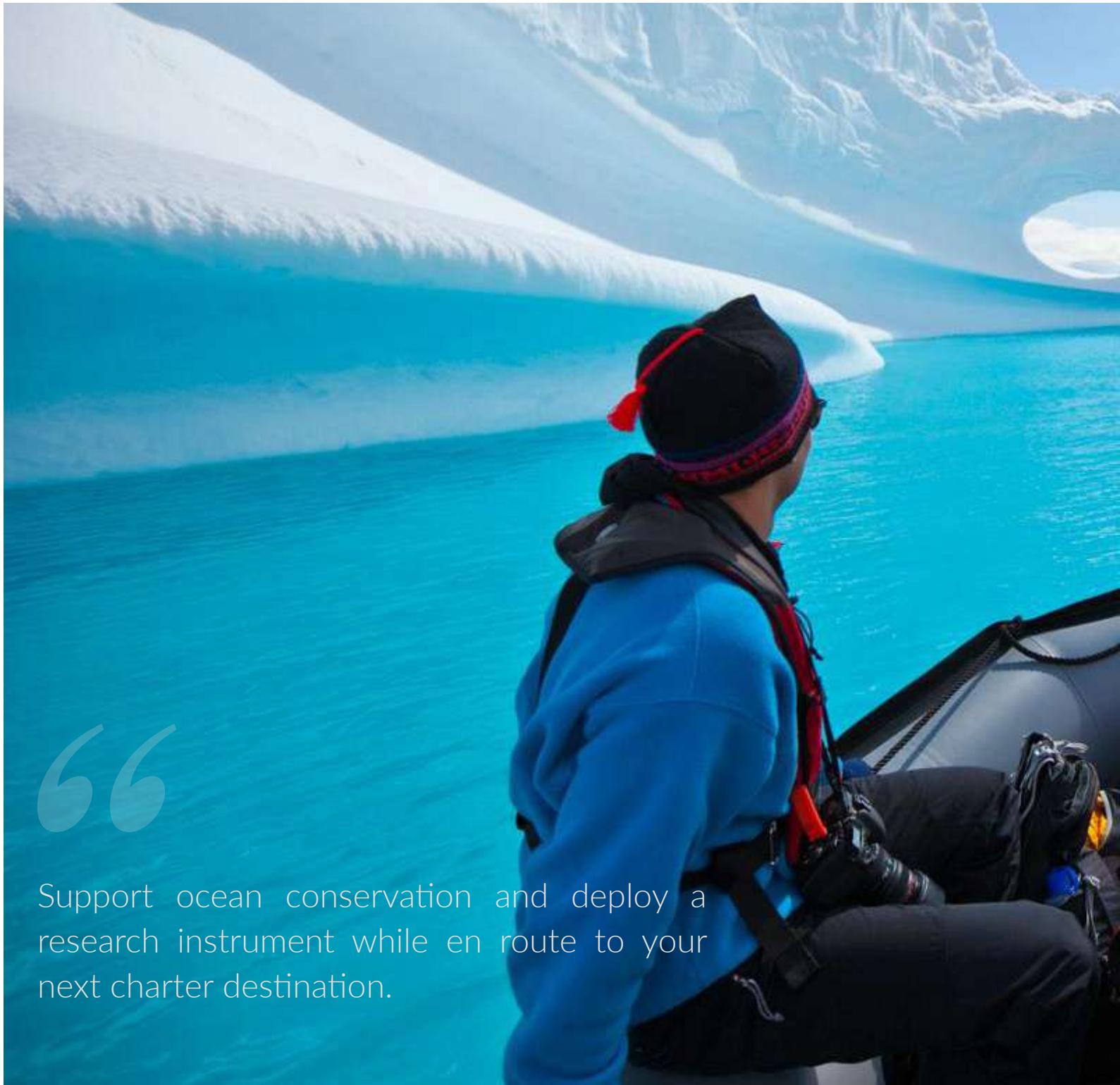
The International SeaKeepers Society promotes oceanographic research, conservation, and education through direct involvement with the yachting community. SeaKeepers enables the yachting community to take full advantage of their unique potential to advance marine sciences and raise awareness about global ocean issues.

Our motto is, "Research. Educate. Protect and Restore."









“

Support ocean conservation and deploy a research instrument while en route to your next charter destination.





# Sun Deck

Surround yourself in beautiful spaces, inside and out. SuRi's vast sundeck is the perfect place to relax and enjoy the sunshine boasting an array of sleek yet comfortable lounging spaces, ideal for both entertaining and unwinding from the day's activities.

Dine al fresco or work on your tan as you soak up the sun on the expansive collection of sun lounges, or zen out beneath the shade of crisp fabric canopies.

















## **Bridge Deck**

Gaze out over the ocean and enjoy uninterrupted floor-to-ceiling ocean views. The observation lounge is a gloriously light-filled and elegant space, featuring plush furnishings, rich wooden features, and earthy tones, perfectly complimenting the blue waters and golden sunsets outside.







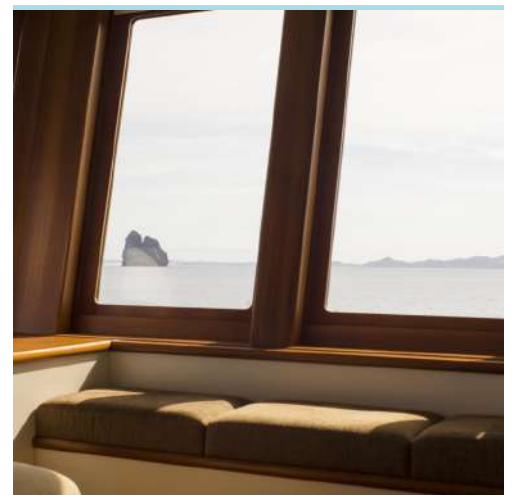
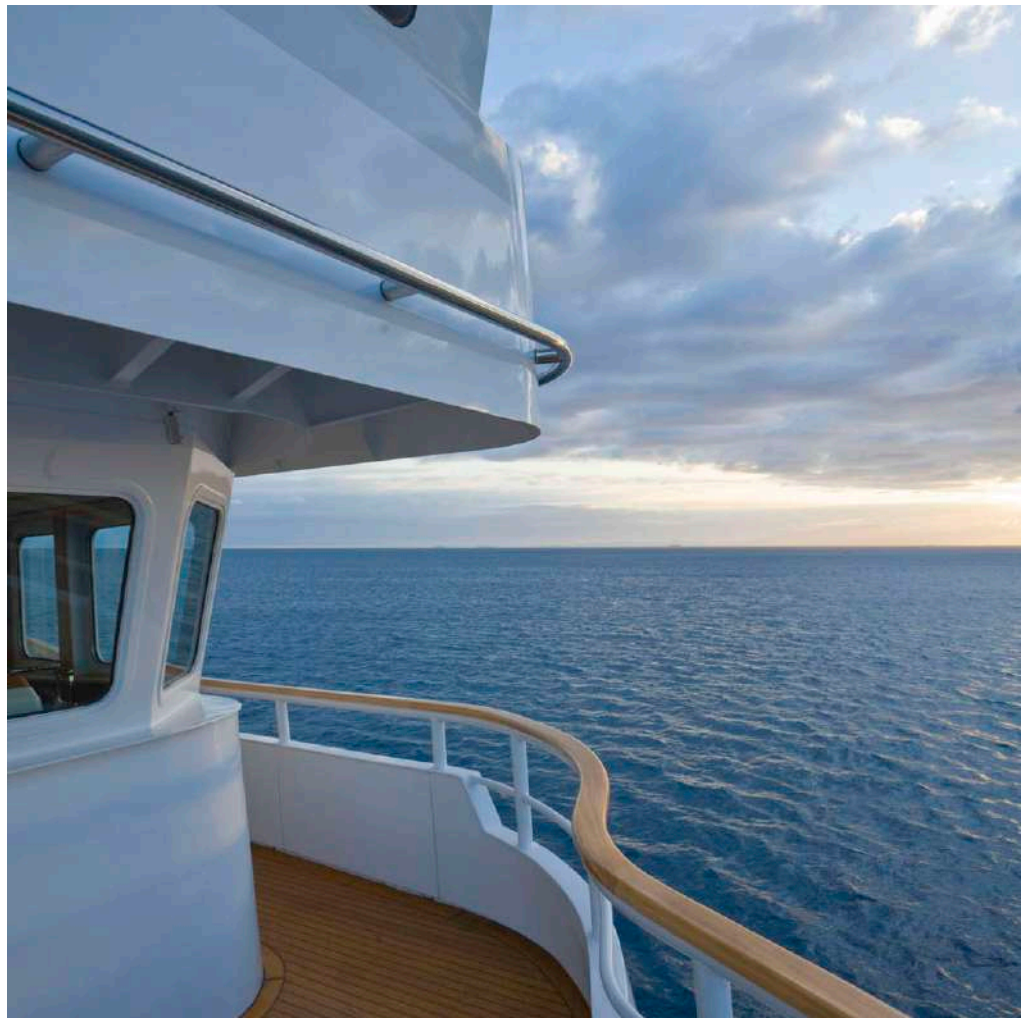












## **Owners Deck**

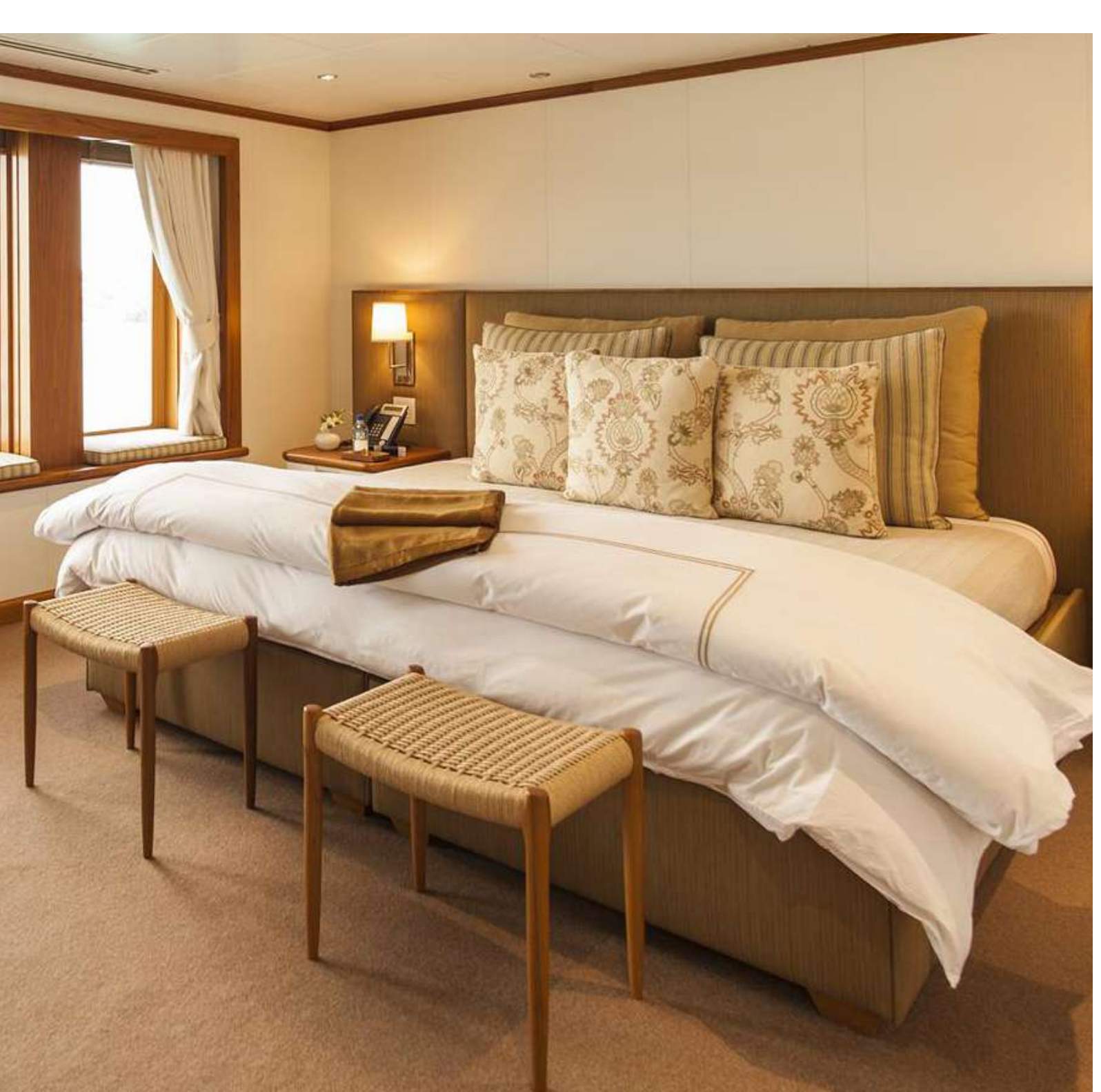
Expansive and contemporary, the owner's deck is a private oasis boasting 5 sumptuous staterooms including four VIP suites, and a full beam master suite with private lounge and office. Each of the staterooms feature large, unobstructed views along with full ensuite bathrooms.







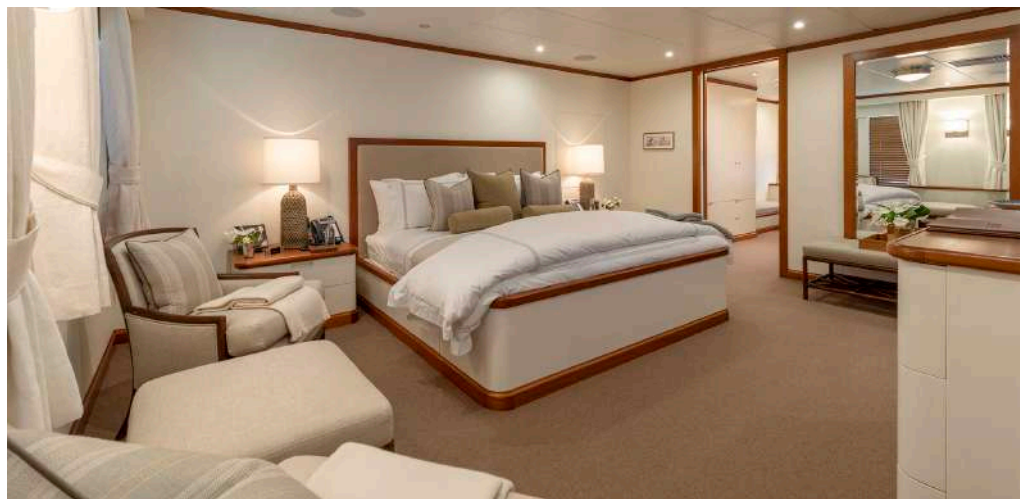






“  
Unwind in the sanctuary of your deluxe private room and ensuite, boasting plush furnishings and unobstructed views.

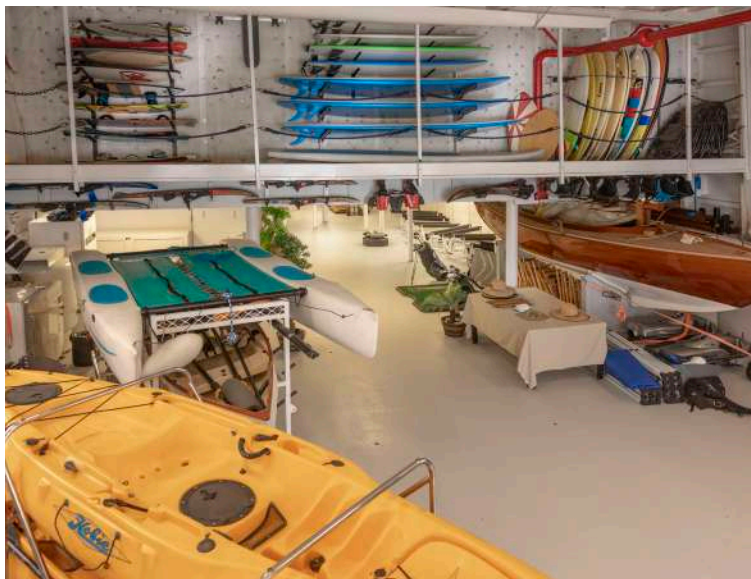




# Hanger Deck

Explore SuRi's gigantic toy box, where you'll find a vast array of water and land equipment, sea craft, and aircraft available for your adventure experiences.

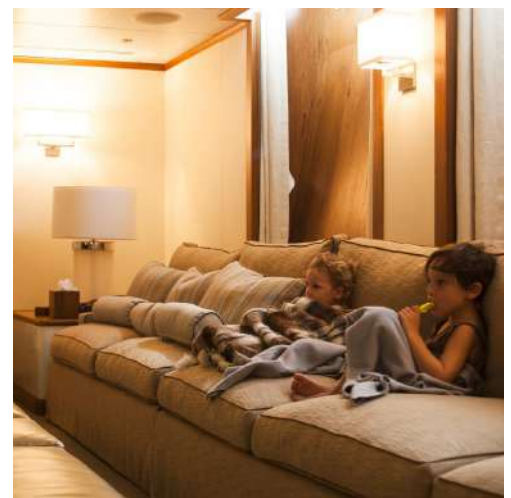




## **Lower Deck**

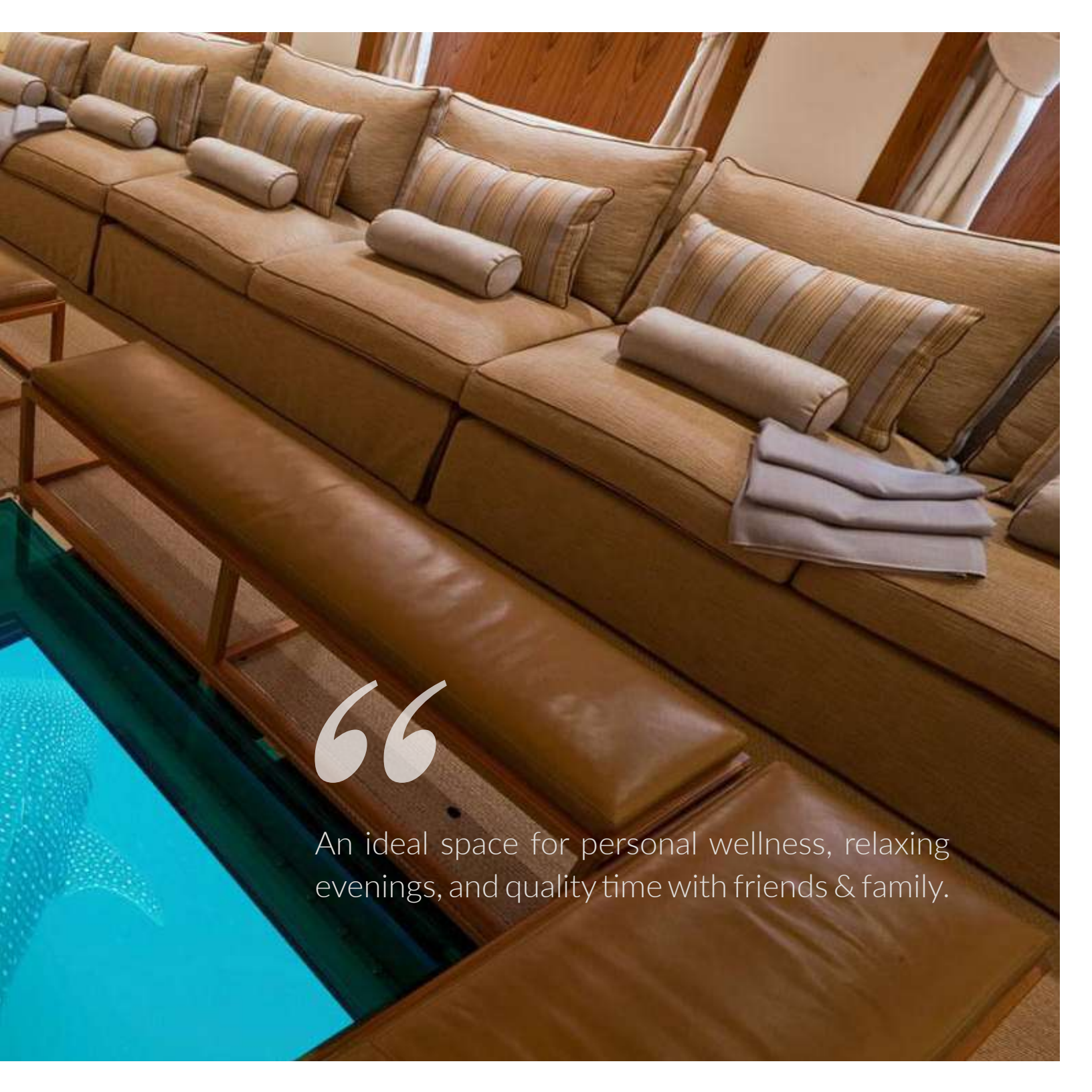
The lower deck is SuRi's center of entertainment and wellness featuring a large media room with its spectacular 'Windows to the Sea', fitness center, yoga studio, private massage room, and two staterooms.











“

An ideal space for personal wellness, relaxing evenings, and quality time with friends & family.

# Watersport Equipment

1 x Mastercraft X10 Wakeboarding and Watersport Speedboat  
Variety of Kneeboards, Wakeboards, & Surfboards  
Adult & Child Connelly Water Skis  
1 x Zapata Fly Board with a Variety of Boots to Fit All Sizes  
1 x Zapata Hover Board with Variety of Boot Sizes  
4 x Yamaha FX High Performance Jet Skis  
2 x Yamaha Superjet Race Performance Stand Up Jet Ski  
2 x Seabob Underwater Scooters  
Freestyle Cruiser Inflatable Water Slide - 11 meter  
Inflatable Rock Climbing Wall  
Inflatable Swimming Pool  
Inflatable Stern Platform for Water Sports Equipment  
Scuba Diving and Snorkelling Gear  
2 x Single Kayaks  
2 x Double Kayaks  
Hobie Cat - 4 Person  
Heritage Single Rowing Boat  
Heritage Double Rowing Boat  
4 x Paddle Boards  
6 x Surfboards - Ranging from 5' to 8'  
SeaDoo Towable Inflatable - 3 Person  
Super Mable Inflatable - 3 Person  
O'Brien Inflatable - 2 Person  
Yellow Banana Boat - 4 person  
Fishing Gear for Trawling / Jigging  
Variety of Big Game Fishing Gear





















# Speedboat & Tenders

Stan-Craft Wooden Speedster (Open Boat) with 600hp Inboard Engines – 1997 deluxe vintage boat that has been fully refurbished with Mahogany wood and comfortable seats; 30 feet in length and can carry 6 passengers; with a maximum speed of 40 knots.

Intrepid Center Console 37 feet (11.3m) with 3 x 300hp Yamaha 4-stroke Outboards – maximum speed of 45 knots, toilet, fully equipped for big game fishing.

Munson Packman – 23 feet (7m) landing Craft with 200hp 4 Stroke -Outboards – maximum speed of 30 knots. This boat takes SuRi's bicycles right up to the beach where you can easily be transferred ashore for adventure .

Mastercraft X10 Wakeboarding Speedboat 2016 - 21 feet with an Ilmor MV-8 5.2Litre Engine. The newest addition to the SuRi fleet of toys boasts a seating area for up to 14 people and creates the ultimate conditions for wakeboarding and other water sports.

Amphibious Sealegs RIB capable of cruising on water and land – 7.7m – Yamaha 200hp outboard engine.

GemClass Gaff Rig, Classic Daysailer 23ft, Designed by Herbert Krumm-Gartner, it retains the feel of a traditional Gaff-rigged yacht with some modern features in her wooden construction. Can carry up to 4 passengers.

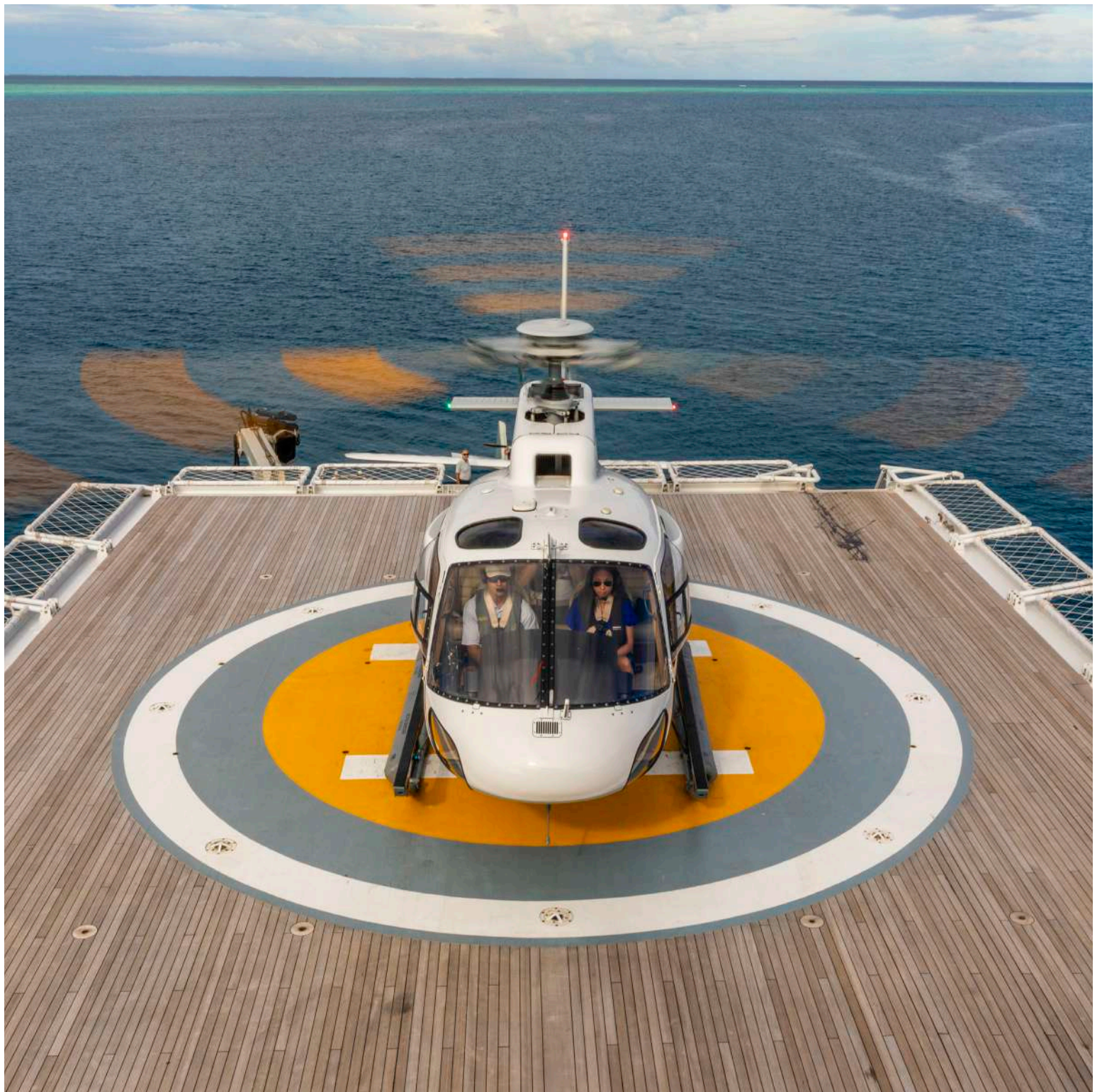




# **Aviation Equipment**

Helicopter: A-Star A350 Squirrel Helicopter seats pilot & 4 passengers to take you on a splendid voyage from ship to shore or vice versa allowing you to enjoy the magnificent landscape and scenery from the sky.

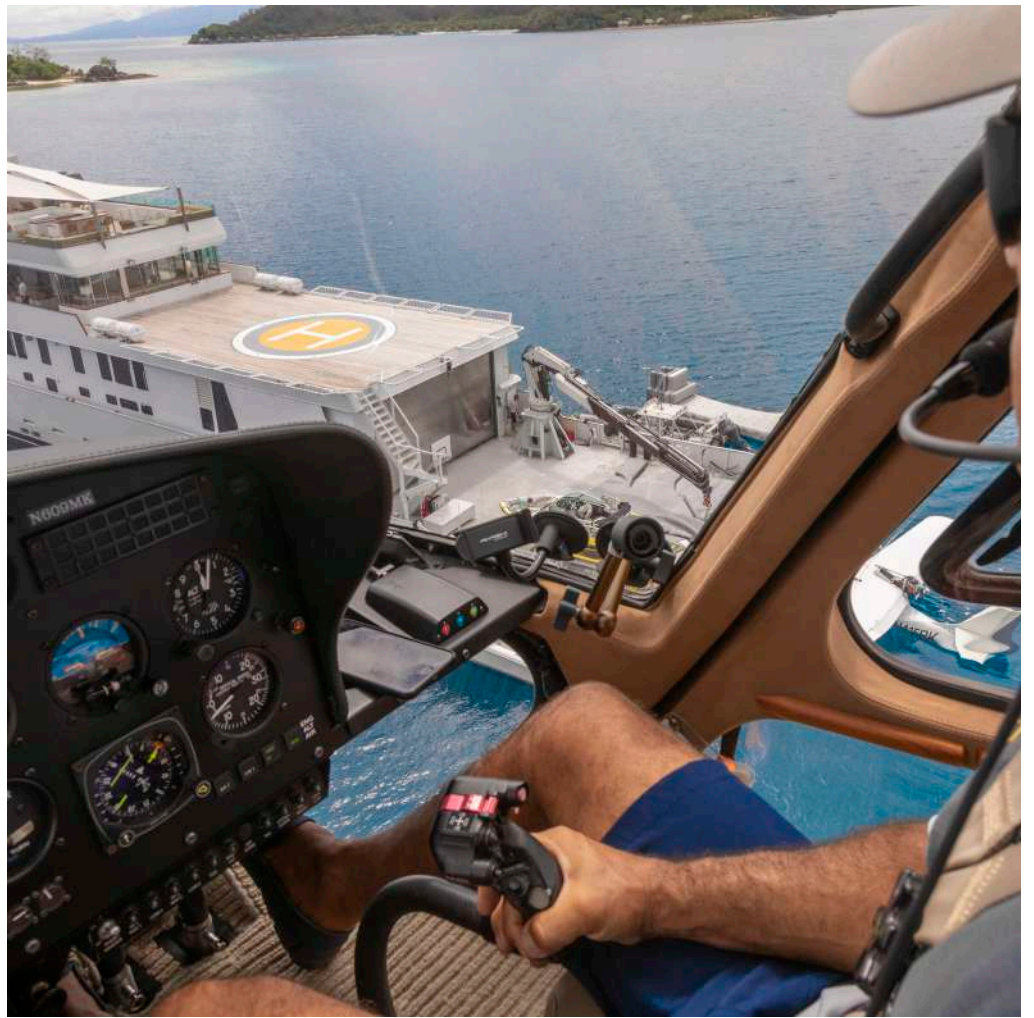












# Land Equipment

Beach Set-up: Beach tent for 12 guests with ample space, Weber BBQ, catering ashore

Cannondale Hybrid Bicycles – 3 Cannondale road bikes





# Health & Wellness

Whether you want to work up a sweat in the fitness centre, find your Zen in the yoga studio, or let our onboard masseuse knead all your worries away, SuRi has everything you need to feel good, inside and out.

- Keiser Performance Trainer is a compact & versatile equipment;
- single-column, wall mounted high-low pulley system.
- Power-Plate my5 Vibration Training Machine
- Life Fitness 9500HR Treadmill
- Precor Elliptical Trainer
- Nautilus SelectTech Dumbbells
- Stott Pilates SPX Max plus Reformer Bundle
- TRX Suspension Training Kit 2016





## **Taste & Service**

From sun-drenched brunch on the sundeck, to cocktails and canapés in the Glass House, to an elegant evening banquet, our onboard chefs create the finest cuisine, masterfully prepared for your indulgence.











# Specifications

## Size & Range

|                |                     |
|----------------|---------------------|
| Length Overall | 208' 0"             |
| Beam           | 38' 0"              |
| Draft Max      | 11' 0"              |
| Draft Min      | 8'                  |
| Gross Tonnage  | 1352 GRT            |
| Displacement   | 750 tons            |
| Ballast        | 79,643 gallons      |
| Fuel Capacity  | 63,733 gallons      |
| Cruise Speed   | 11 knots            |
| Range          | 9,900 NM @ 11 knots |
| Max Speed      | 13 knots            |

## Propulsion & Power

|               |  |
|---------------|--|
| Main Engines: | 2 x CAT 3508C<br>820kW each                            |
| Generator:    | 2 x CAT C6.6 @ 125kW each<br>1 X 85 kW (Emergency Gen) |
| Water Maker:  | 2000 gpd Village<br>3 x village marine                 |
| Trans:        | Twin Disc MG 540                                       |
| Bow Thruster: | GM DD 8V71 (300 hp)                                    |

## Accommodation

|                    |                           |
|--------------------|---------------------------|
| Number of cabins:  | 7                         |
| Bed configuration: | 6 King, 1 Queen, 4 Single |
| Number of guests:  | 12                        |





# Watersport Equipment

Mastercraft X10 Wakeboarding and Watersport Speedboat

Variety of Kneeboards, Wakeboards, & Surfboards

Adult & Child Connelly Water Skis

1 x Zapata Fly Board with a Variety of Boots to Fit All Sizes

1 x Zapata Hover Board with Variety of Boot Sizes

4 x Yamaha FX High Performance Jet Skis

2 x Yamaha Superjet Race Performance Stand Up Jet Ski

2 x Seabob Underwater Scooters

Freestyle Cruiser Inflatable Water Slide - 11 meter

Inflatable Rock Climbing Wall

Inflatable Swimming Pool

Inflatable Stern Platform for Water Sports Equipment

Scuba Diving and Snorkelling Gear

2 x Single Kayaks

2 x Double Kayaks

Hobie Cat - 4 Person

Heritage Single Rowing Boat

Heritage Double Rowing Boat

4 x Paddle Boards

6 x Surfboards - Ranging from 5' to 8'

SeaDoo Towable Inflatable - 3 Person

Super Mable Inflatable - 3 Person

O'Brien Inflatable - 2 Person

Yellow Banana Boat - 4 person

Fishing Gear for Trawling / Jigging

Variety of Big Game Fishing Gear



# Speedboat & Tenders

Stan-Craft Wooden Speedster (Open Boat) with 600hp Inboard Engines  
Intrepid Center Console 37 feet (11.3m) with 3 x 300hp Yamaha 4-stroke Outboards  
Mastercraft X10 Wakeboarding and Watersport Speedboat  
Munson Packman Landing Craft  
Amphibious Sealegs RIB  
GemClass Gaff Rig

# Aviation Equipment

Conditions Apply On Use

A-Star A350 Squirrel Helicopter

# Land Equipment

Cannondale Hybrid Bicycles – 3 Cannondale Road Bikes  
Beach Set-up: Beach Tent for 12 guests with Ample Space, Weber BBQ, & Catering Ashore

# Fitness Equipment

Keiser Performance Trainer  
Power-Plate my5 Vibration Training Machine  
Life Fitness 9500HR Treadmill  
Precor Elliptical Trainer  
Nautilus SelectTech Dumbbells  
Stott Pilates SPX Max plus Reformer Bundle  
TRX Suspension Training Kit - 2016



# SuRi

Fulfilling your adventure charter dreams!